



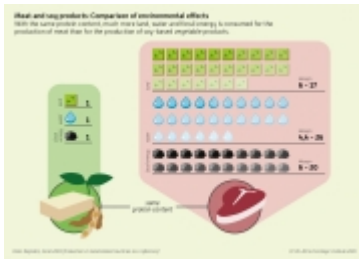
Published on *Ecologic Institute: Science and Policy for a Sustainable World*
(<https://www.ecologic.eu>)

[Home](#) > Meat and Soy Products: Comparison of environmental effects

PUBLICATION

Infographic
Consumer Policy
Energy
Land Use
Resource Conservation + Circular Economy
Water

Meat and Soy Products: Comparison of environmental effects



[1]

This infographic compares the environmental effects of meat and soy products. It visualises that, with the same protein content, considerably more land, water and fossil energy is used for the production of meat than for the production of soy-based vegetable products. The infographic is licensed under a Creative Commons license CC BY-ND 4.0, i. e. it can be used without any changes, if the author is mentioned.

Ecologic Related Articles

- Sustainable Diets
- A Sustainable Economy: Working papers on sustainable food systems and living labs
- Handlungsansätze zur Förderung nachhaltiger Ernährungssysteme
- Sustainable Nutrition Systems and Sustainable Nutrition Culture - Action approaches for transformative processes and practices

Citation

Ecologic Institute 2019: Meat and Soy Products: Comparison of environmental effects. Infographic.

Language

English, German

Credits

Concept: Stephanie Wunder, Ruth Haake (Ecologic Institute)

Graphic design: Ruth Haake (Ecologic Institute)

Year

2019

Source URL (modified on 06/04/2019 - 09:52): <https://www.ecologic.eu/16618>

Links

[1] <https://www.ecologic.eu/sites/files/presentation/2019/infografik-lebensmittel-umwelteffekte-meat-soy-en.jpg>