



Miljø- og Fødevareministeriet
Miljøstyrelsen

Danish National Rural Development Program

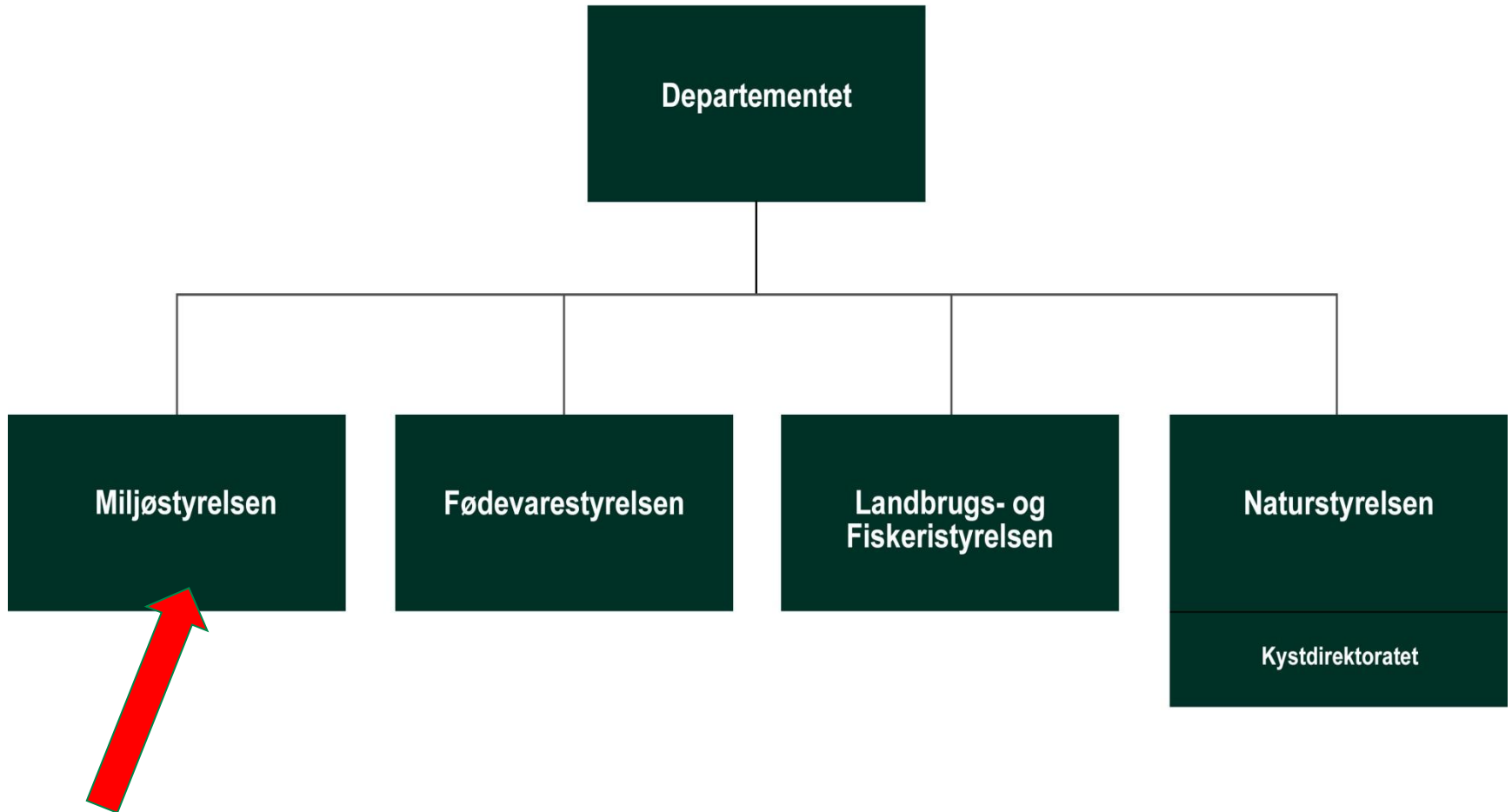
Measures towards sustainable rural growth

Bettina Helle Jensen, Danish EPA

Organisation



Miljø- og Fødevareministeriet



Danish RDP 2016-2020

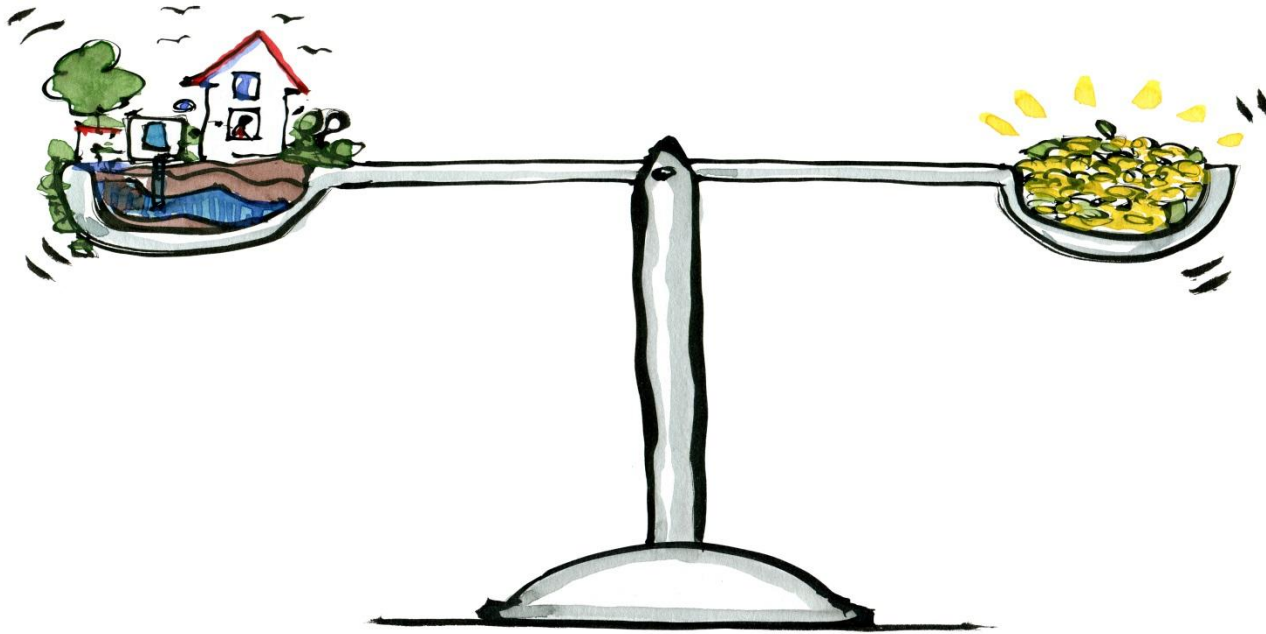
- Financial possibility for political targets
- "Paying the bill"
- Focus shifting from national nice-to-have to European need-to-have
- implementation of Natura 2000 Directives and Water Framework Directive.
- Close co-operation with municipalities on wetland projects
- Flexibility has been activated : +5 +6 + 7%. From pillar 1 to pillar 2.
- In total 9,3 mio. DKK (1,3 mio. Euro)
- 73 % reimbursed from EU
- The programme has been changed 4 times so far in this period.



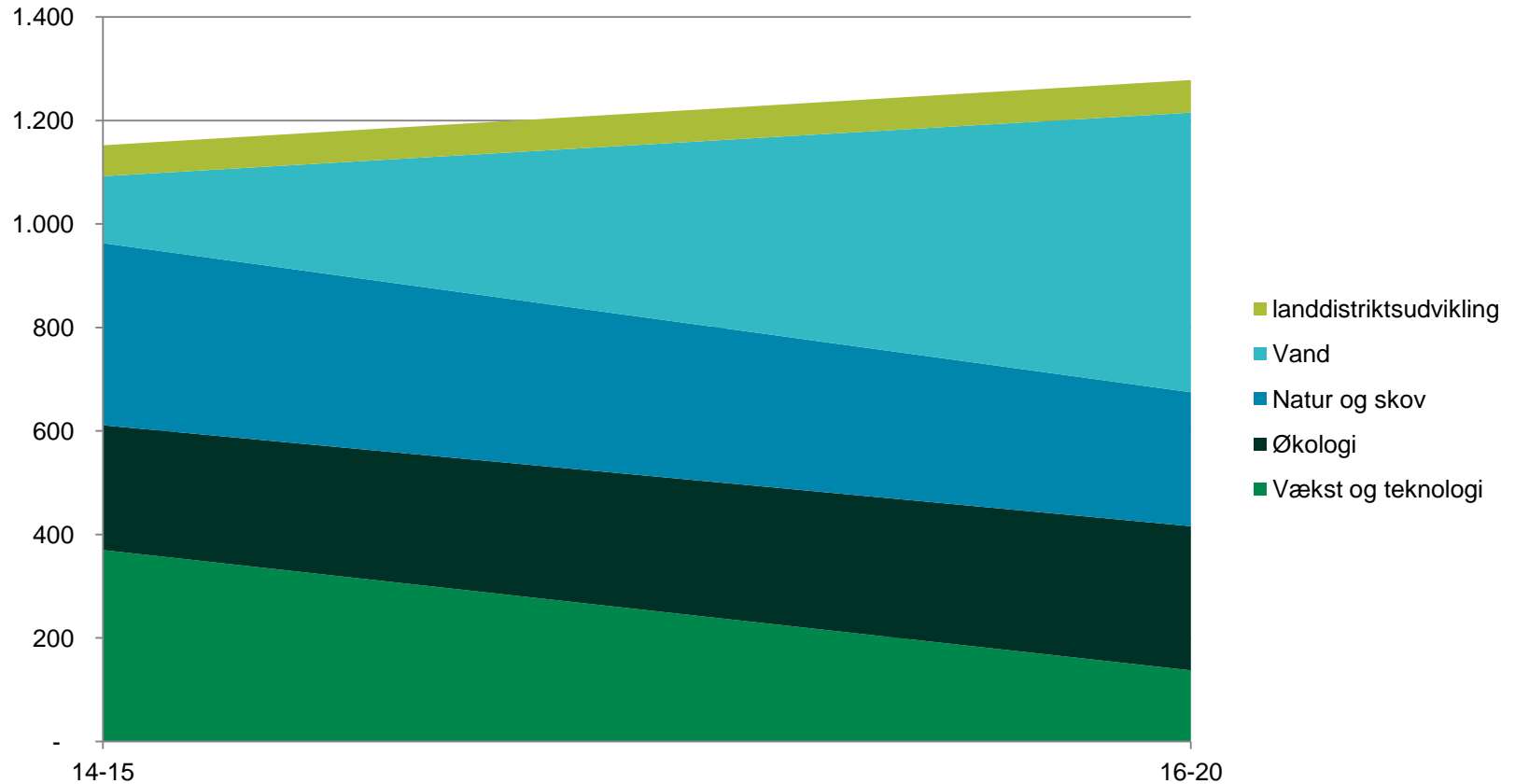
Priorities DK RDP 2017-2020:

1. Growth and competition (DKK 138 m/ E20)
2. Organic – land grants (DKK 279 m/E40)
3. Nature and Environment (DKK 799 m/E100)
4. Local action groups (LEADER) (DKK 63 m/E10)

Total (DKK 1.278 mio.)



DK RDP 16-20 Development in priorities - yearly budget (mio. DKK.)



Bilag 1: Landdistriktsprogrammet 2017-2020

Indsatser under Landdistriktsprogrammet, bruttotilsagn (mio. kr.)						
	2016	2017	2018	2019	2020	2017-2020 (gns.)
Vækst og konkurrenceevne	472,0	300,0	200,0	50,0	0,0	137,5
Staldindsats og miljøteknologi	392,0	300,0	200,0	50,0	-	137,5
Erhvervsudvikling, heraf 15 mio. kr. til økologi	80,0	-	-	-	-	-
Økologi	240,0	57,4	59,4	830,3	167,3	278,6
Økologisk arealtilskud (forventet areal i 2020: ca. 218.000 ha. med en årlig vækst på 5.300 ha.)***	199,5*	57,4	59,4	830,3	167,3	278,6
Økologisk investeringsstøtte	40,5	-	-	-	-	-
Natur og miljø	515,3	584,0	672,2	1.026,8	913,6	799,2
<i>Heraf naturindsatser</i>	250,4	260,0	235,0	303,0	237,0	258,0
Natura 2000-projekter – pleje, facilitering og planlægning (planlægning kun i 2016)	35,3	20,0	20,0	20,0	15,0	18,8
Naturlige vandstandsforhold i Natura 2000-områder	30,1	20,0	0,0	0,0	0,0	5,0
Sammenhængende arealer	-	8,0	13,0	17,0	17,0	13,8
Sikring af Natura 2000-skov, herunder planlægning fra 2017	25,0	22,0	22,0	23,0	23,0	22,5
Pleje af græs- og naturarealer****	130,0	190,0	180,0	243,0	182,0	198,8
Landskabs- og biotopforbedrende beplantninger (læhegn)	10,0	-	-	-	-	-
Bilag IV-arter	5,0	-	-	-	-	-
Bæredygtig skov	15,0	-	-	-	-	-
<i>Heraf vandindsatser</i>	264,9	189,0	232,2	329,0	331,8	270,5
Vådømråder (N)	185,9	110,0	153,2	250,0	252,8	191,5
P-vådømråder	14,0	14,0	14,0	14,0	14,0	14,0
Lavbundsprojekter	65,0	65,0	65,0	65,0	65,0	65,0
<i>Midler til yderligere kvælstofindsatser</i>		135,0	205,0	394,8	344,8	269,9
Vådømråder (yderligere)	-	100,0	100,0	100,0	100,0	100,0
Minivådømråder	-	0,0****	70,0	160,0	160,0	97,5
Privat skovrejsning	-	35,0	35,0	35,0	35,0	35,0
Reserve til målrettet regulering	-	-	-	99,8	49,8	37,4
Landdistriktsudvikling	90,3	63,0	63,0	63,0	63,0	63,0
Lokale aktionsgrupper (LAG)	90,3	63,0	63,0	63,0	63,0	63,0
I alt, tilsagn	1.317,6	1.004,4	994,6	1.970,1	1.143,9	1.278,3

* For omlægning af regnskabsprincip for økologisk arealtilskud. ** Inkl. ca. 18.000 ha økologisk areal, der ikke modtager økologisk arealstøtte. ***Pleje af græs-tilsagn er 5-årige. **** Fremrykkes om muligt. Tilsagnsprofilen er dimensioneret, så eksisterende tilsagn kan gentages..

RDP Measures

Nature			DKK per year 258,8 (35 mio. Euro)
<i>primary</i>	<i>secondary</i>		
Biodiversity /N2000	water	Natura 2000 projects – management (inv. only)	18,8
Biodiversity /N2000	water	Hydrology in Natura 2000 (inv. and area)	5
Biodiversity /N2000	outdoor life, ground water	Natura 2000 forest, incl. planning	22,5
Biodiversity /N2000	Outdoor life	Management of grassland and nature areas	198,8



RDP Measures

Water and Nitrate			DKK per year 540,4 (73 mio. Euro)
<i>Primary</i>	<i>Secondary</i>		
WFD/N-reduction	nature	Wetlands (N+P) (inv. and area)	305,5
WFD/N-reduction	nature	Wetland on organic soil (inv. and area)	65
WFD/N-reduction		Mini wetlands (inv. only)	97,5
WFD/N-reduction	Nature, climate	Private afforestation (inv. only)	35



In addition....

National nature/biodiversity measures:

- **Hedgerows (biodiversity, Nature, outdoor life)**
- **Untouched forest (biodiversity, Nature, outdoor life, climate, Water)**
- **Green infrastructure N2000 (biodiversity, Nature, outdoor life, water)**



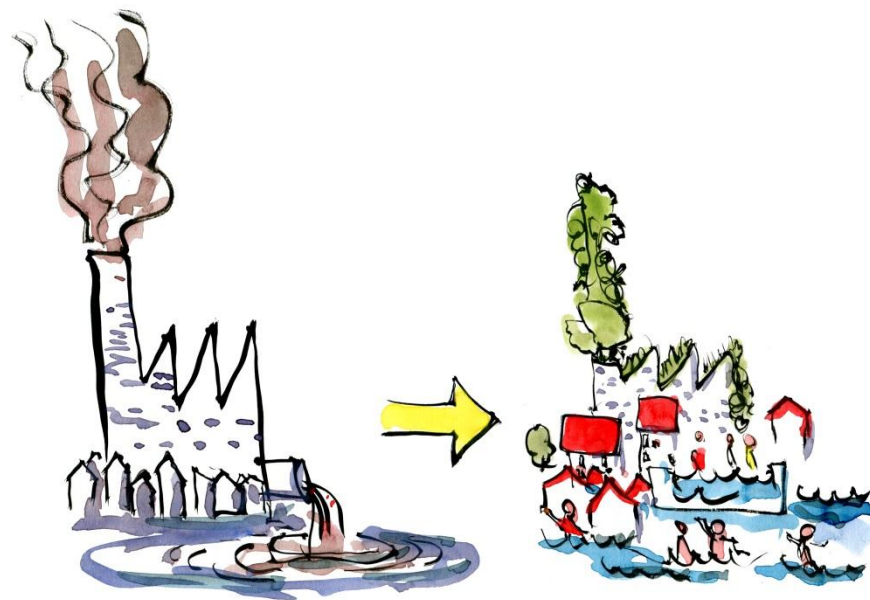
Synergy-projects

Climate proofing doesn't only have to be about digging holes in the ground or expanding drain pipes. By thinking creatively, climate proofing could clear the way for new nature solutions, more outdoor life, and less nitrogen in the water. Nine new projects are providing tangible examples.

By The Ministry of Environment and Food of Denmark, 2016.12.21



As a part of their nature projects, Danish Minister for Environment and Food, Esben Lunde Larsen has granted DKK 24,4 million to nine project in which municipalities will take care of climate proofing and ensuring better environmental conditions and less nitrogen in the aquatic environment.



[Link: https://stateofgreen.com/en/profiles/mim/news/newnature-solutions-prevent-cities-from-flooding](https://stateofgreen.com/en/profiles/mim/news/newnature-solutions-prevent-cities-from-flooding)



Socio-economic effects

Activity	Regional developments	jobs	rural settlements	Local business	Rural tourism	Social connectivity	Capacity building
N2K management	✓	✓	✓	✓	✓		
N2K hydrology	✓	✓	✓	✓			
N2K forest	✓	✓	✓	✓	✓		
grassland and nature areas	✓	✓	✓	✓	✓		
Wetland (N+P)	✓	✓	✓	✓	✓		
Wetland (organic soil)	✓	✓	✓	✓	✓		
Mini wetland	✓	✓	✓	✓			
afforestation	✓	✓	✓	✓			
Hedgerows	✓	✓	✓	✓			
Untouched forest	✓	✓	✓	✓	✓		✓
Green infrastructure	✓	✓	✓	✓	✓		✓
Synergy-projects	✓	✓	✓	✓	✓	✓	✓

