



# Community-Led Nature-based Solutions in the Moheli Seascape, Comoros

## Regenerative Seascapes for People, Climate & Nature (ReSea) Project

**Ecosystem-based Adaptation (EbA) for Coastal Resilience: In-depth Workshop on Community Engagement and Strengthening Partnerships for Coastal EbA**

*Loubna HAMIDI, NbS Officer, IUCN ESARO*

*[loubna.hamidi@iucn.org](mailto:loubna.hamidi@iucn.org)*

*22 April 2026*

## Who am I?



- I am an environmental and climate change adaptation specialist, with a strong focus on the blue economy
- Currently, I serve as a **Nature-Based Solutions Officer** with the International Union for Conservation of Nature (IUCN) in the Comoros, Moheli seascape, where I support sustainable management of coastal and marine ecosystems. I have also represented the African Group of Negotiators at UN climate conferences as part of the Young Women Negotiators on Climate Change in Africa, contributing to global climate policy discussions
- I serve as Vice Chair of the Steering Committee for Women in Marine Science (WIOMSA), where I actively promote the participation of women and youth in marine research and innovation. I am deeply committed to advancing gender inclusion in environmental decision-making and was recognised among the 100 African Women Leading Africa's Water & Sanitation Future (2026)
- I hold an MSc in Climate Change and Sustainable Development from the University of Dar es Salaam, and I am fluent in French, English, Kiswahili, and Comorian



Connecting seascapes across the region through a living blue wall of critical ecosystems and partnerships, integrating ocean conservation, regenerative blue economy, innovation, governance, policy and science

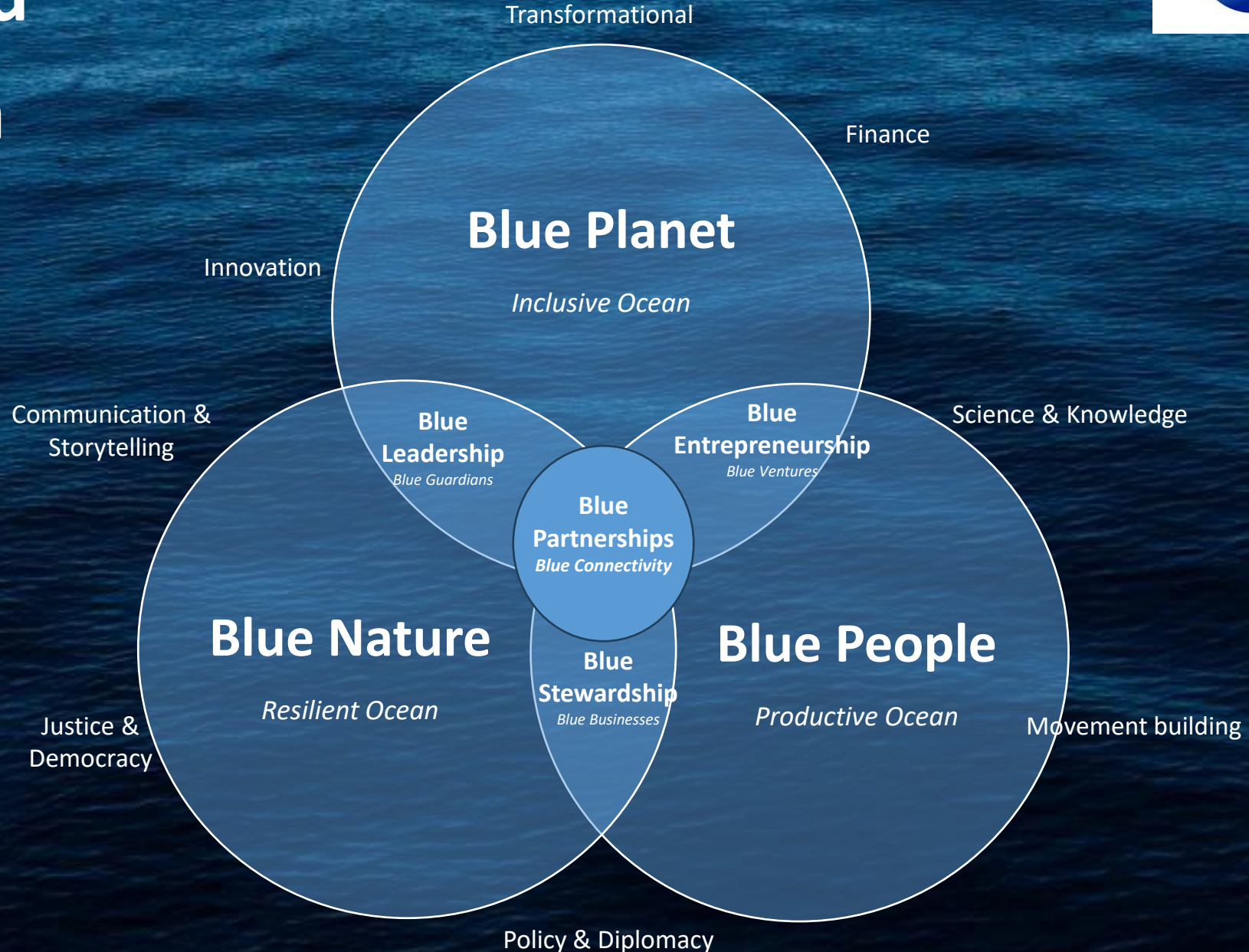
# The Great Blue Wall Initiative

- Kilifi seascape, Northern Kenya
- Tanga-Pemba Seascape, Tanzania
- Inhambane Seascape, Mozambique
- Antsiranana- Diana Seascape, Madagascar
- Moheli Seascape, Comoros
- Mauritius, Rodrigues
- Seychelles
- South Africa
- Somalia
- Sao Tome & Principe
- Cape Verde



International, continental, regional, national and seascape level interventions

# Integrated Approach



# NbS for Climate Adaptation

## Understand IUCN Standard

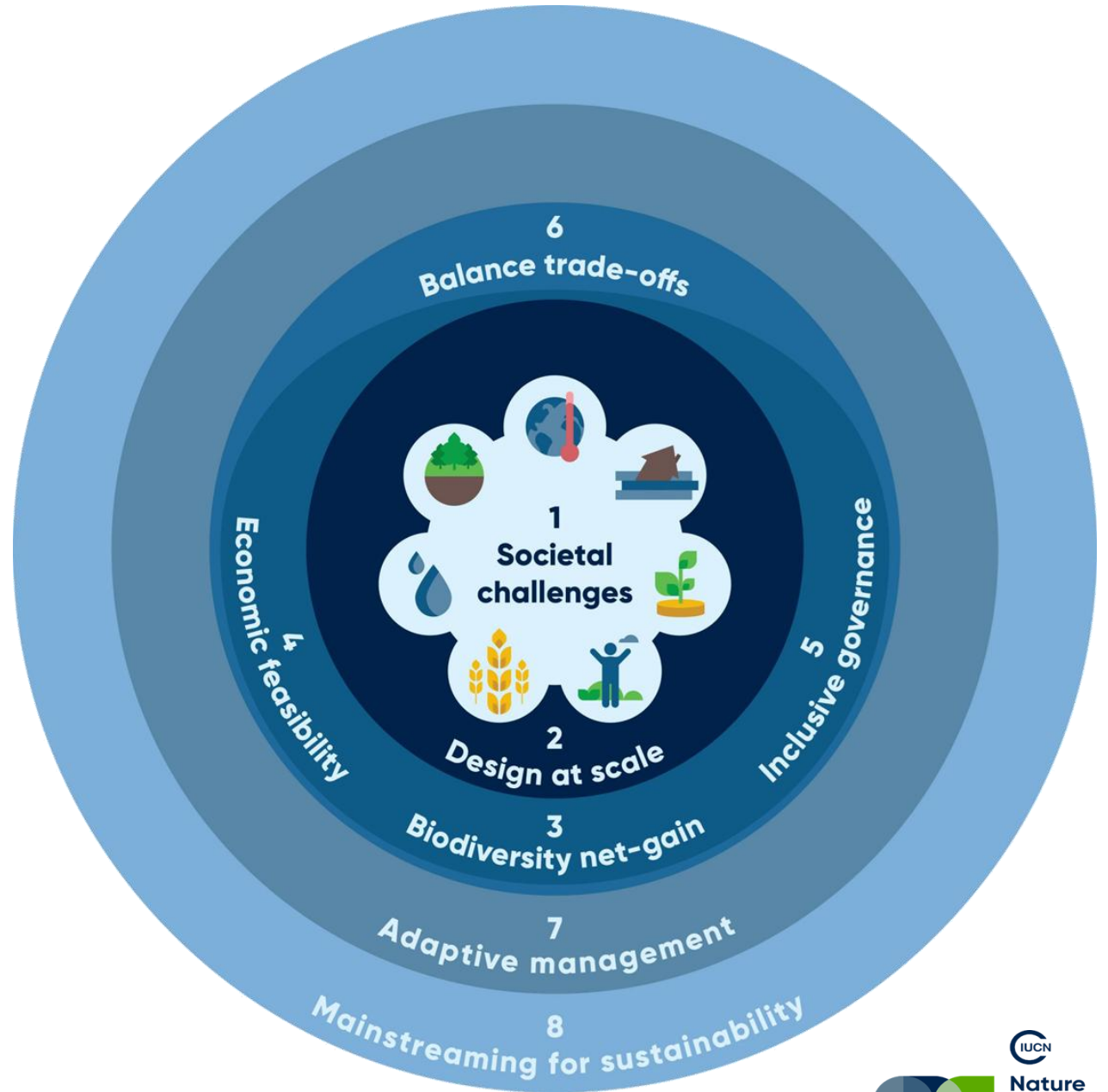
IUCN Standards & Framework: Application of NbS standard and EbA Operational Framework to ensure effective, scalable solutions

## Consultation & Capacity Building

Capacity building and learning  
Training models  
Community of practice

## Practice, Policy and Scale

NbS for coastal and ocean habitats restoration  
NbS and policy engagement  
Community development and livelihood  
Local and regional context and scale up



## BLUE NATURE

Fostering NbS for adaptation

2 million ha of critical coastal and ocean ecosystems restored

# Nature-based solutions (NbS) vs Ecosystem based adaptation (EbA)



- **Nature-Based Solutions (NbS)** are a broad umbrella approach that uses nature to address societal challenges such as climate change, disaster risk, and food security while delivering multiple co-benefits, including biodiversity conservation, human well-being, and sustainable livelihoods
- **Ecosystem-Based Adaptation (EbA)** is a more specific subset of NbS that focuses on the protection, restoration, and management of ecosystems to help communities adapt to climate change and strengthen resilience
- **The key difference is that all EbA approaches are NbS**, but NbS goes beyond climate adaptation and covers a wider range of objectives

## The ReSea project

Duration : 4 years (march 2023 - march 2027)

Budget : 31 475 815\$ (30 000 000\$ from GAC, 1 475 815\$ from IUCN and Mi)

536 939 beneficiaries since 2023 (55% women 48% youth)

“Previously, we women were afraid. We thought leadership in fisheries was only for men. But after receiving training from the ReSea Project, we realized that the ocean belongs to all of us and so does the responsibility to protect it.”

-Member of the Pangani Magharibi Beach Management Unit



**Blue Planet**

Supporting community-led governance of locally managed marine areas (LMMA) and marine protected areas (MPA)

155 639

persons reached through 159 awareness sessions on women's rights, positive masculinities and gendered impacts of climate change and ecosystem management measures

3 317

members (51% women) actively participate in the awareness raising on LMMA's climate adaptation benefits

41 700 km<sup>2</sup>

of seascape area brought under effective management, conservation and/or restoration



**Blue Nature**

Advancing gender-responsive nature-based solutions (NbS) for climate adaptation

9

nature-based solutions demonstration sites identified, 3 of which are operational and include mangrove restoration, and coral reef and seagrass protection

270

persons trained on nature-based solutions for climate adaptation

316

stakeholders (decision makers and partners) participating and engaged in the science-to-business to policy forums



**Blue People**

Strengthening women's economic leadership in the blue economy

1 568

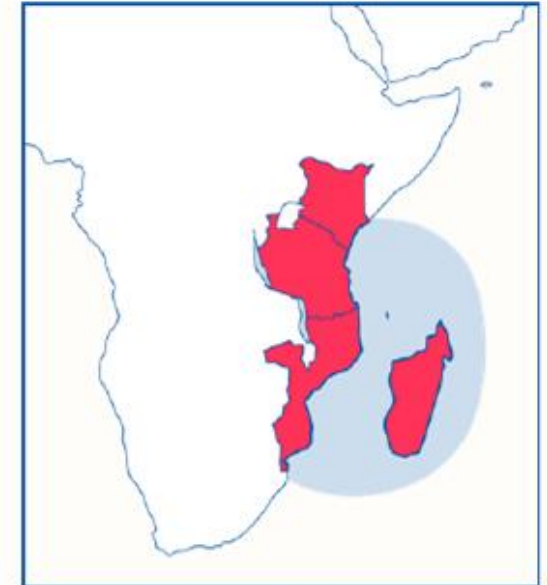
persons have successfully completed training or capacity-building initiatives on advocacy skills, human rights, leadership development, and organizational management

8

nature-based value chain identified and promoted among women and youth within the blue business sector

992

participants (80% women) with access to blue economy business opportunities



ReSea is enhancing the physical, social and economic resilience in coastal communities across five countries of the Western Indian Ocean region: Kenya, Tanzania, Mozambique, Comoros, and Madagascar



## Mwali (Comoros)



The Mwali Biosphere Reserve encompasses the entire land and marine territory of Moheli, the smallest of the islands of the Union of the Comoros, which is located in the Mozambique Channel ecoregion. Its location in this area gives it a high level of biological diversity and endemism, with a continental shelf extending down to the 100m isobath, in the intertropical marine biogeographic region of the south-west Indian Ocean.

**Declaration Date:** 2021

**Country:** Union of the Comoros

**Surface Area:** 66,286.5 ha (29,000 ha terrestrial / 37,286.5 ha marine)

**Resident population:** 40,000 inhabitants

**Contact:** Lailina Daniel ✉ [dalayass98@yahoo.fr](mailto:dalayass98@yahoo.fr)

[See on the map](#)

[See here](#)







# ReSea Advancing Gender-responsive NbS for climate adaptation

## Moheli



Advancing gender-responsive nature-based solutions (NbS) for climate adaptation

**1**  
nature based solution demonstration site identified, operational and focusing on coastal forest, mangrove and seagrass restoration, protection

**250+**  
people trained on nature-based solutions for climate adaptation and restoration best practices

**100+**  
stakeholders (decision makers and partners) engaged in the science-to-business-to-policy forum at national/regional and global levels



STORY 14 AUG, 2024

## IUCN's Pioneering Nature Based Solution (NbS) Training for Climate Adaptation in Moheli Seascape, Comoros

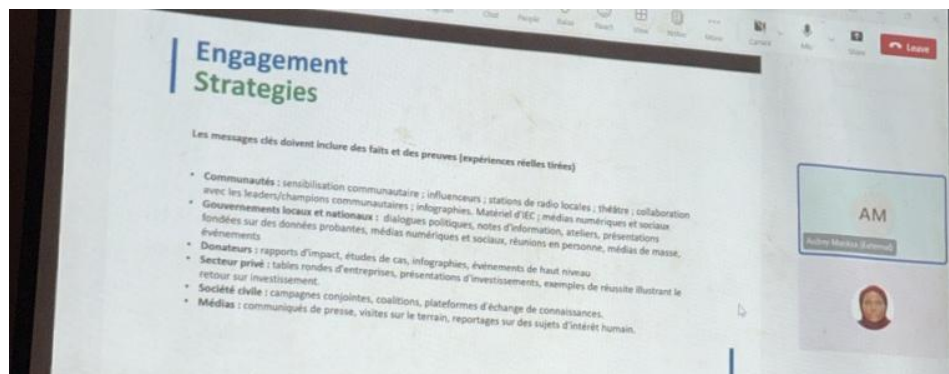
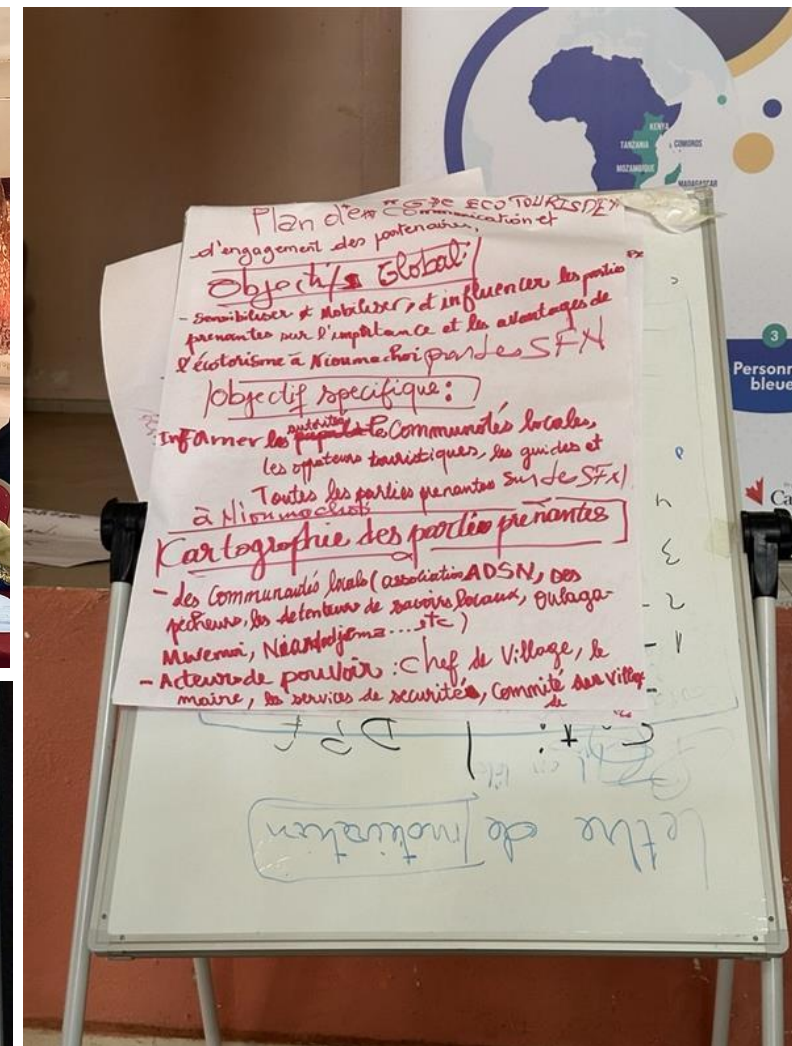
From July 22 to 26, 2024, the IUCN team working under the ReSea Project conducted a *Training Workshop on Nature-Based Solutions for Adaptation (NbS)* based on the IUCN Global Standard. The ReSea Project aims to regenerate seascapes by restoring habitats, protecting marine biodiversity, and enhancing coastal community resilience.



# NbS Communication Plan

## Driving stakeholder's empowerment and leadership

- NbS training and seascape priorities defined for NbS actions
- NbS communication strategy and plan developed
- Policy, awareness, and collective actions prioritized



# Women Influencers

## NbS role models in Moheli Seascape



**Women influencer ReSea project Mohéli Comores**  
88 followers · 5 suivi(e)s · 35 publications

Page · Amélioration de l'habitat

**Amélioration de l'habitat**

Suivi(e) par Soibaha Madi Attoumani, Houmrak Housseni, Abdur'hman Baggio Hassanaly et 21 autres personnes

Suivi(e) Message

Tout Photos Reels Mentions

**Détails**

★ Pas encore évalué (0 avis)

**Coordonnées**

Women influencer ReSea project Mohéli Comores

**Toutes les publications**

Women influencer ReSea project Moh...  
Épinglé · 23 févr. ·

Le Samedi 14 Février, la communauté de Ndrodroni s'est réunie pour un grand moment

# The Building Blocks NbS implementation

## Integrating Climate Resilience and Community Action

Strategic success relies on aligning foundational capacity, equitable access, and daily sustainable practice.

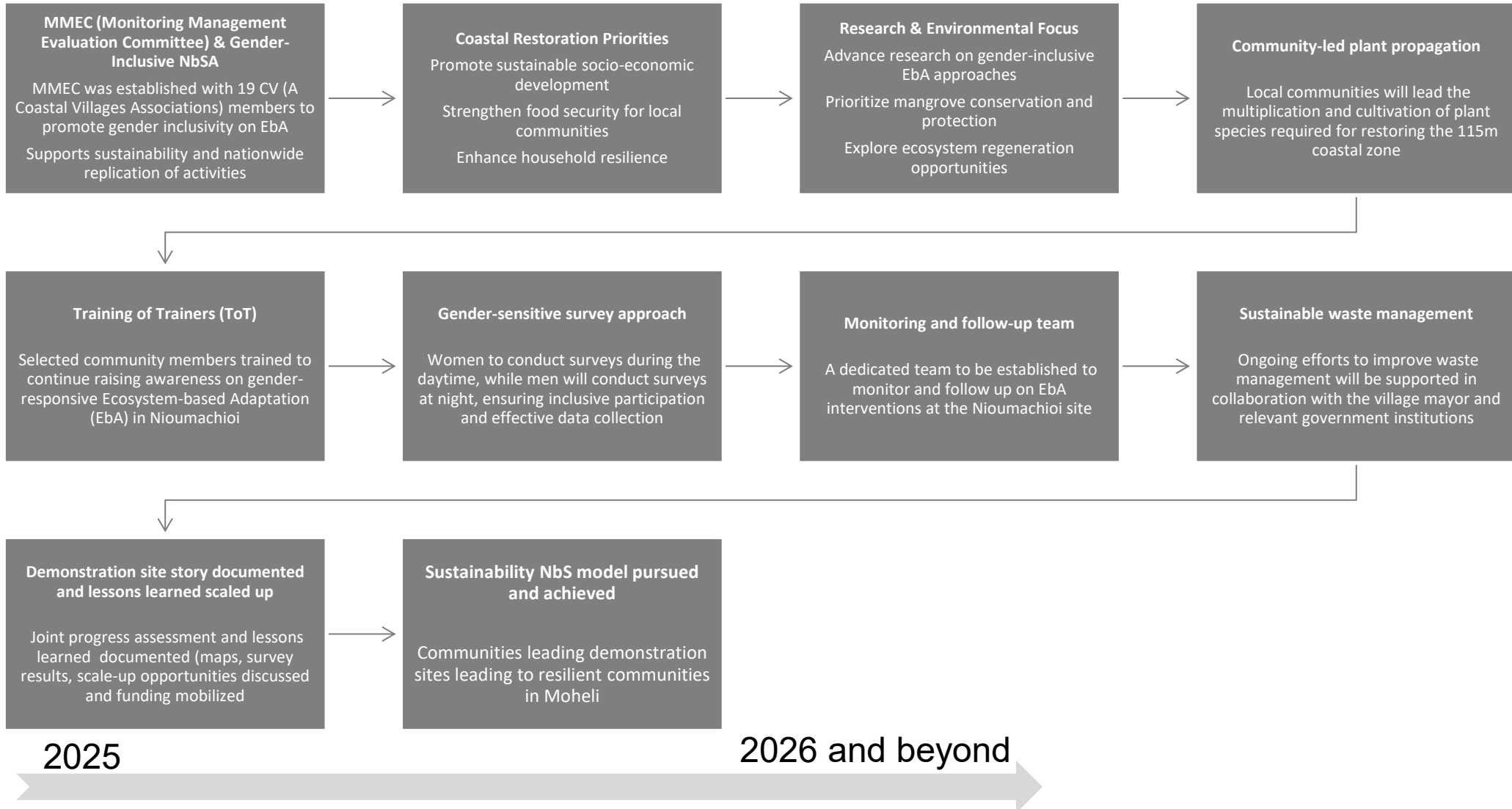


# The Building Blocks

## Transitioning from Frameworks to Local Ownership



# NbS/EbA Implementation Strategy: Coastal Restoration Plan



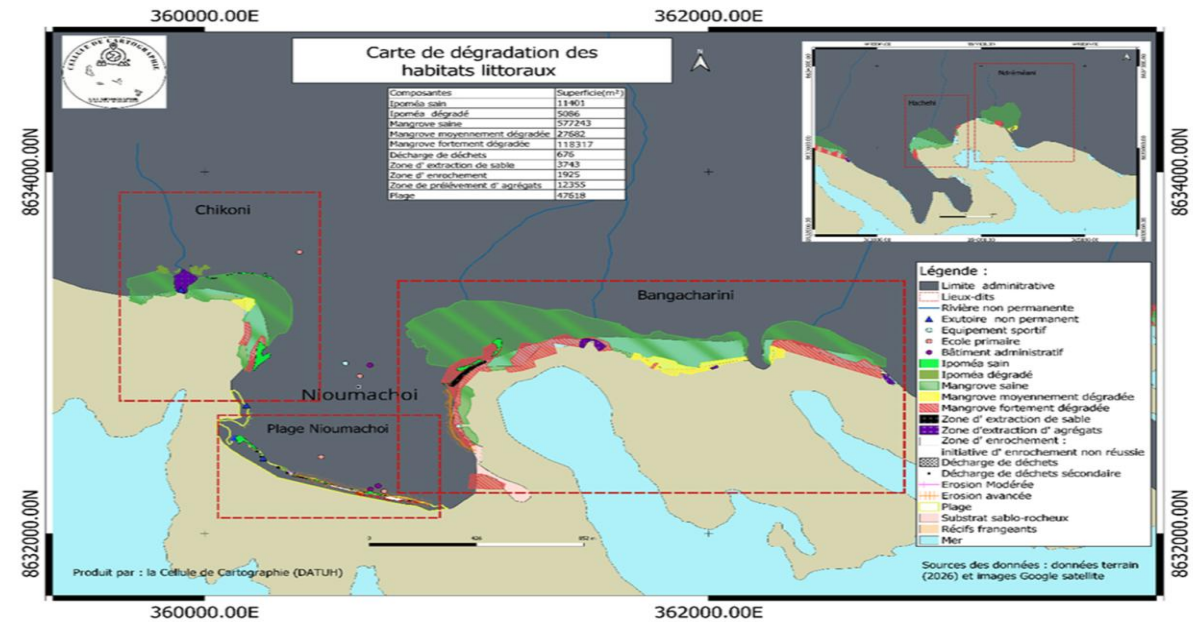
# Consultation Workshops

## Communities Participatory Mapping and alignment

- Update participatory mapping with local communities
- Strengthen understanding of coastal ecosystems
- Ensure interventions align with current climate realities



### Nioumachioi Site Updated Blue Ecosystems Map



# NbS/EbA Strategy implementation

## Restoration Plan kick-off with local communities and training center set up



# SUCCESSFUL NbS / EbA IMPLEMENTATION IN COMOROS

Resilient People. Healthy Nature. A Sustainable Future.



- RESTORED MANGROVES
- HEALTHY SEAGRASS BEDS
- PROTECTED COAST STRONGER FUTURE



**CLIMATE RESILIENCE**  
Coasts protected from erosion, storms and sea level rise



**HEALTHY ECOSYSTEMS**  
Restored habitats support biodiversity and sustain marine life



**STRONGER LIVELIHOODS**  
Sustainable fisheries, seaweed farming and ecotourism create income



**INCLUSIVE COMMUNITIES**  
Women and youth empowered to lead and benefit



**LOCAL STEWARDSHIP**  
Communities manage and protect their ocean and coastal resources

TOGETHER FOR PEOPLE, CLIMATE AND NATURE



Denise Nicolau, Moheli seascape

**Questions?**

# Great Blue Wall

Connect with us

