

Community support and ownership of the Pemba Channel EbA project in Tanzania



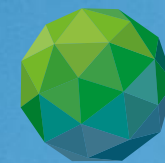
Ben Taylor, WCS Tanzania
Tanguy Nicolas, Fauna & Flora





PROCESS TO ESTABLISH MARINE CONSERVATION AREAS IN EASTERN PEMBA

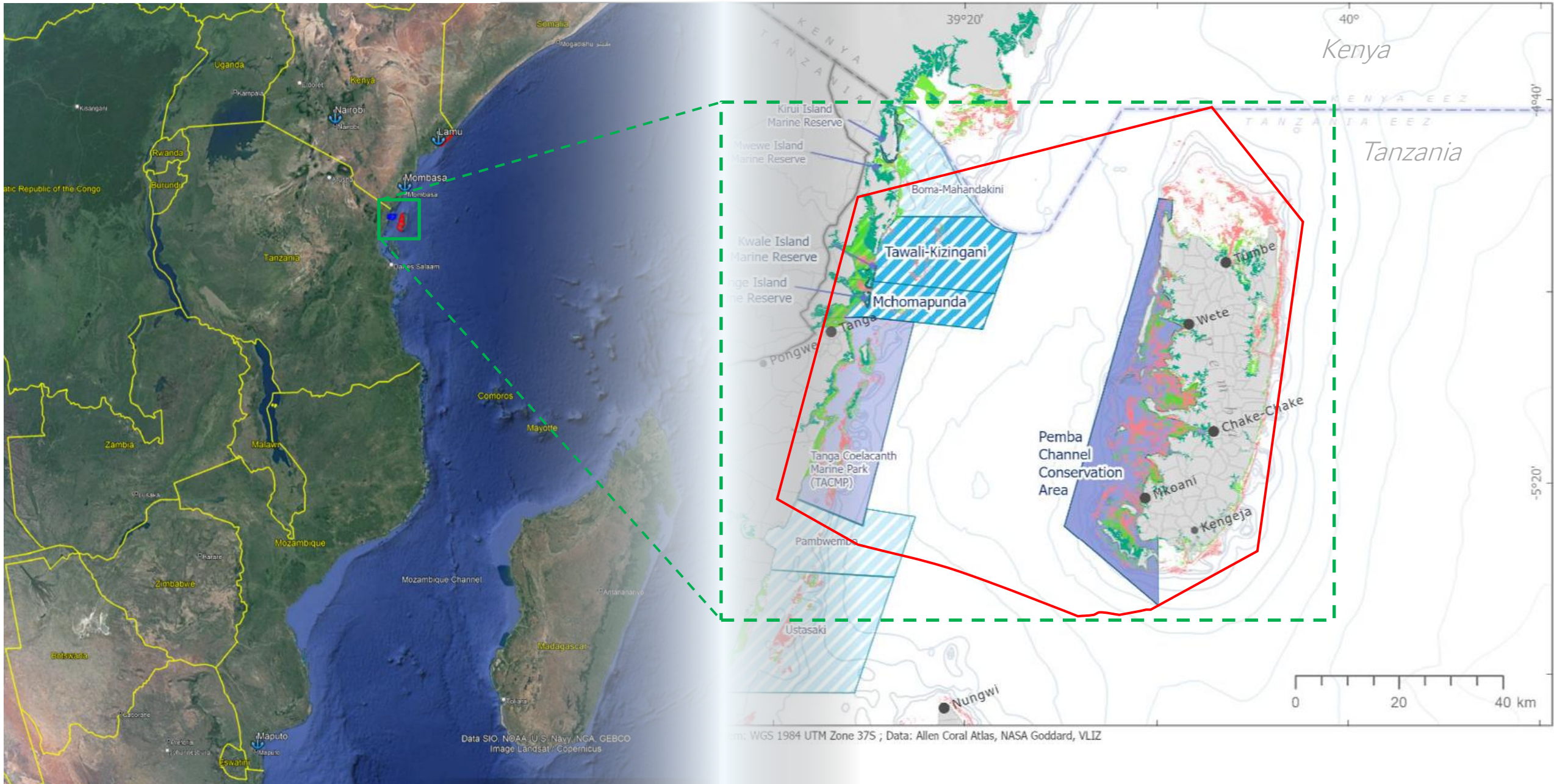
April 2026



GREEN
CLIMATE
FUND



Pemba Channel seascape – United Republic of Tanzania



THE CONTEXT

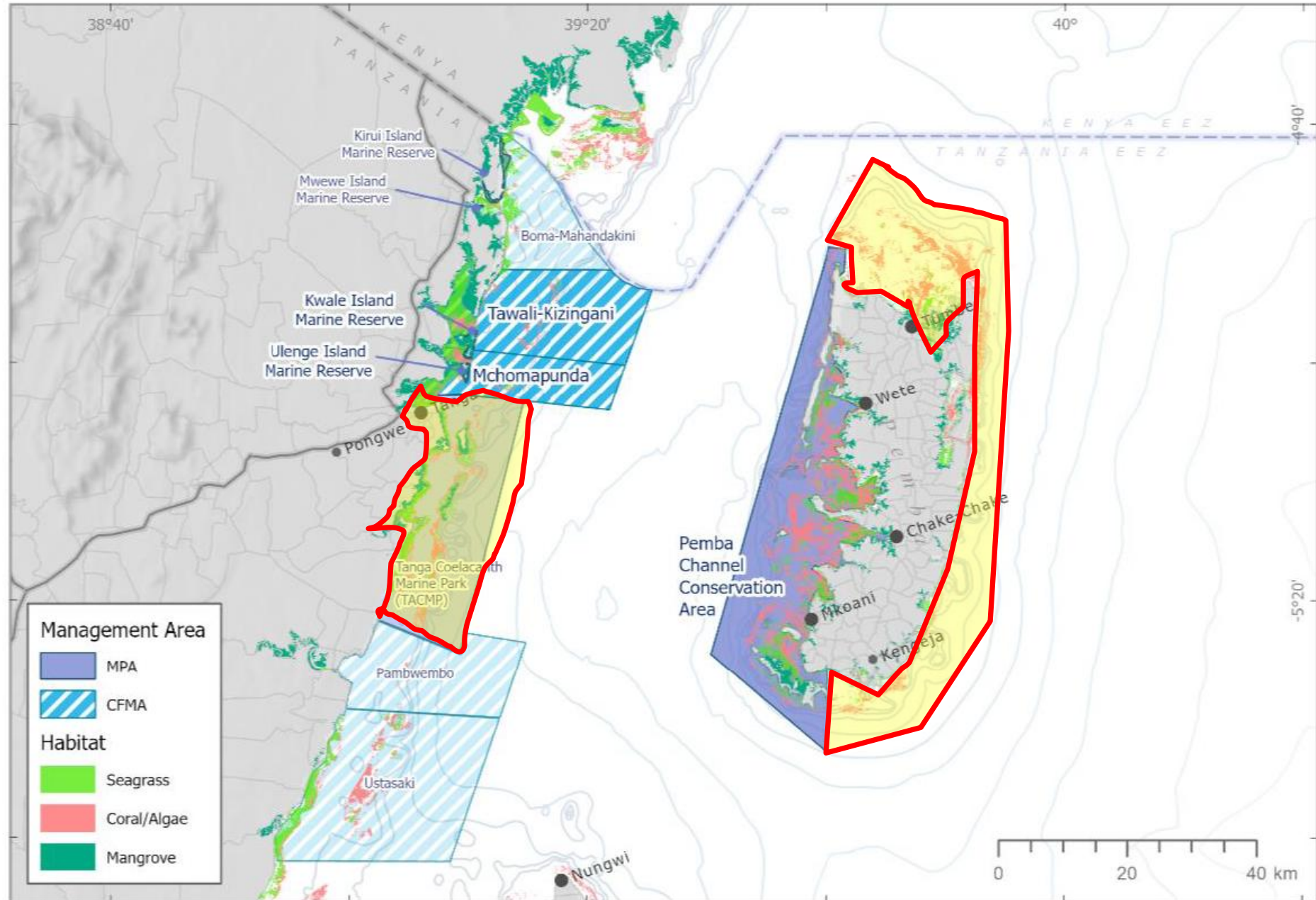
- Poverty and climate vulnerability (but lots of nuances)
- Marine and coastal resources on the decline
- Coral reefs degraded
- Increasing numbers of fishers
- Few resources for Monitoring Control Surveillance
- Widespread illegal use of gears, incl. resurgence of dynamite fishing
- Rural areas: livelihood options and jobs are limited
- Women and youth have little opportunity for voice

THE PROBLEM – Lack of effective regulation

- Tragedy of the commons?
- However: nearshore fisheries and mangroves can be managed under a gender-inclusive 'common property regime'
- Coastal community **holds right to manage local area** and marine resources.
Neighbours can fish/use if they follow the rules.



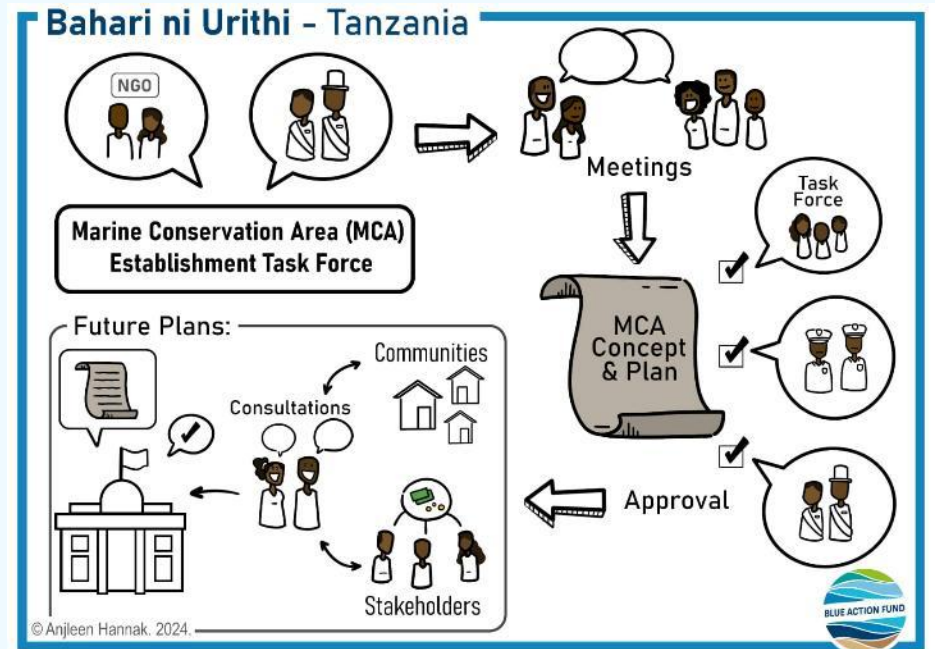
Pemba Channel – Geographical scope – WCS





MCA consultation process

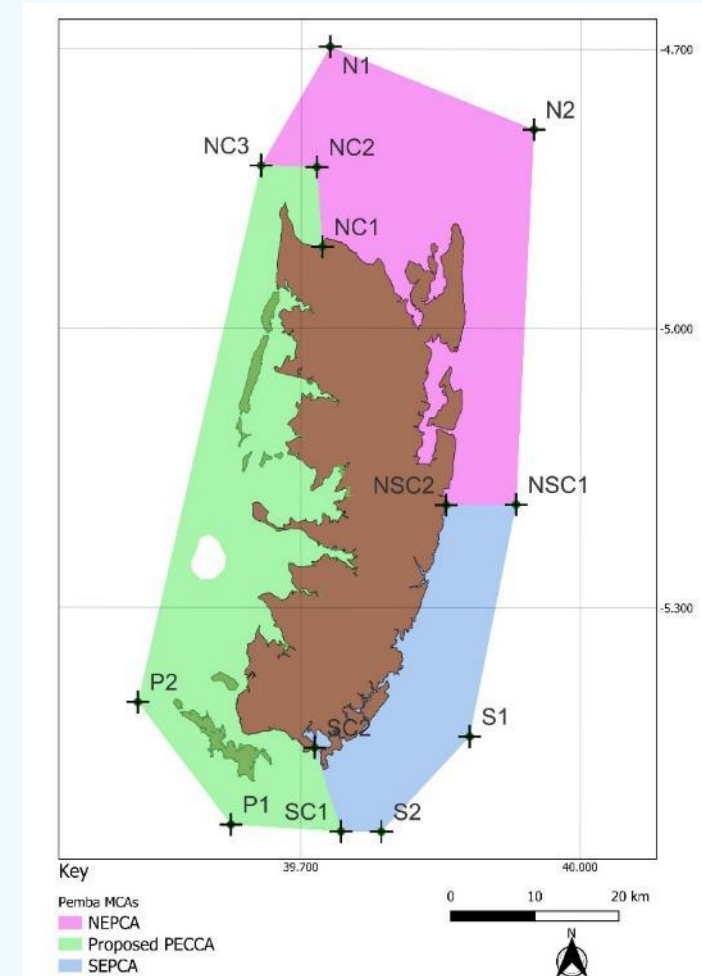
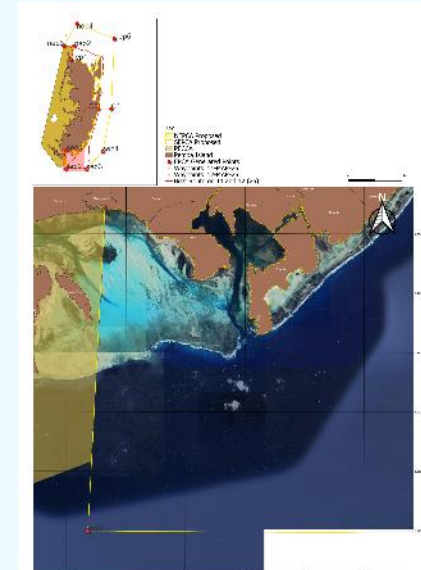
- Development plan for Pemba East setup of taskforce team
- Stakeholder mapping
- Broad stakeholder consultation engagement meetings
- Public announcement on MCA development in Pemba East
- Village by village consultation meeting
 - 1st round
 - 2nd round
- Public stakeholder consultation meeting
- Finalisation of the report including the findings
- Broad stakeholder validation meeting
- Presentation to MBEF and wider government
- Submit findings report and gazettelement documents to government





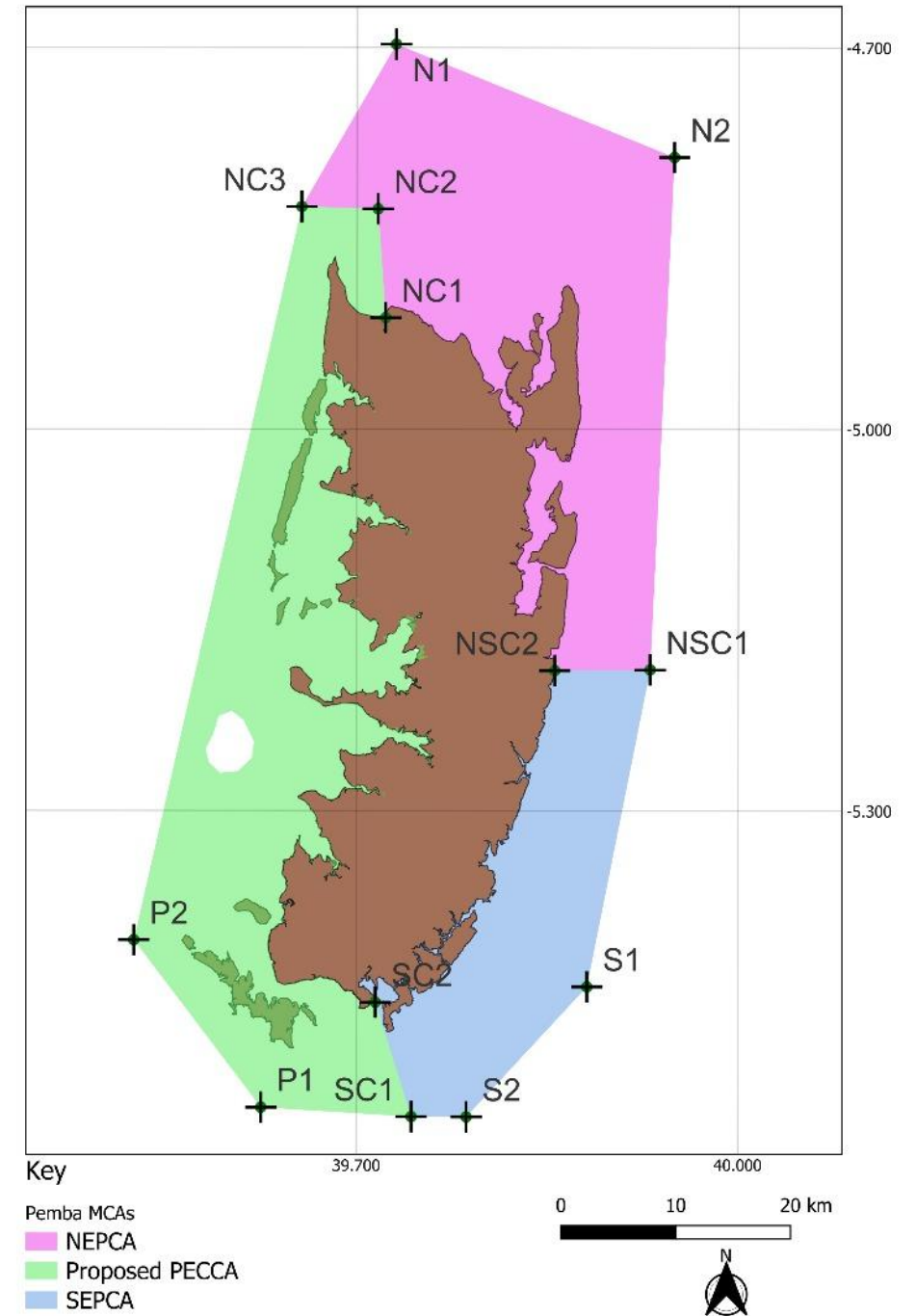
After consultation process

1. Mapping exercise to test boundaries (fishers and government)
2. Create maps with suggested boundaries
3. Gazettement of new MCAs
4. Demarcation of the new MCAs
5. Installation of MCA ranger team and capacity building





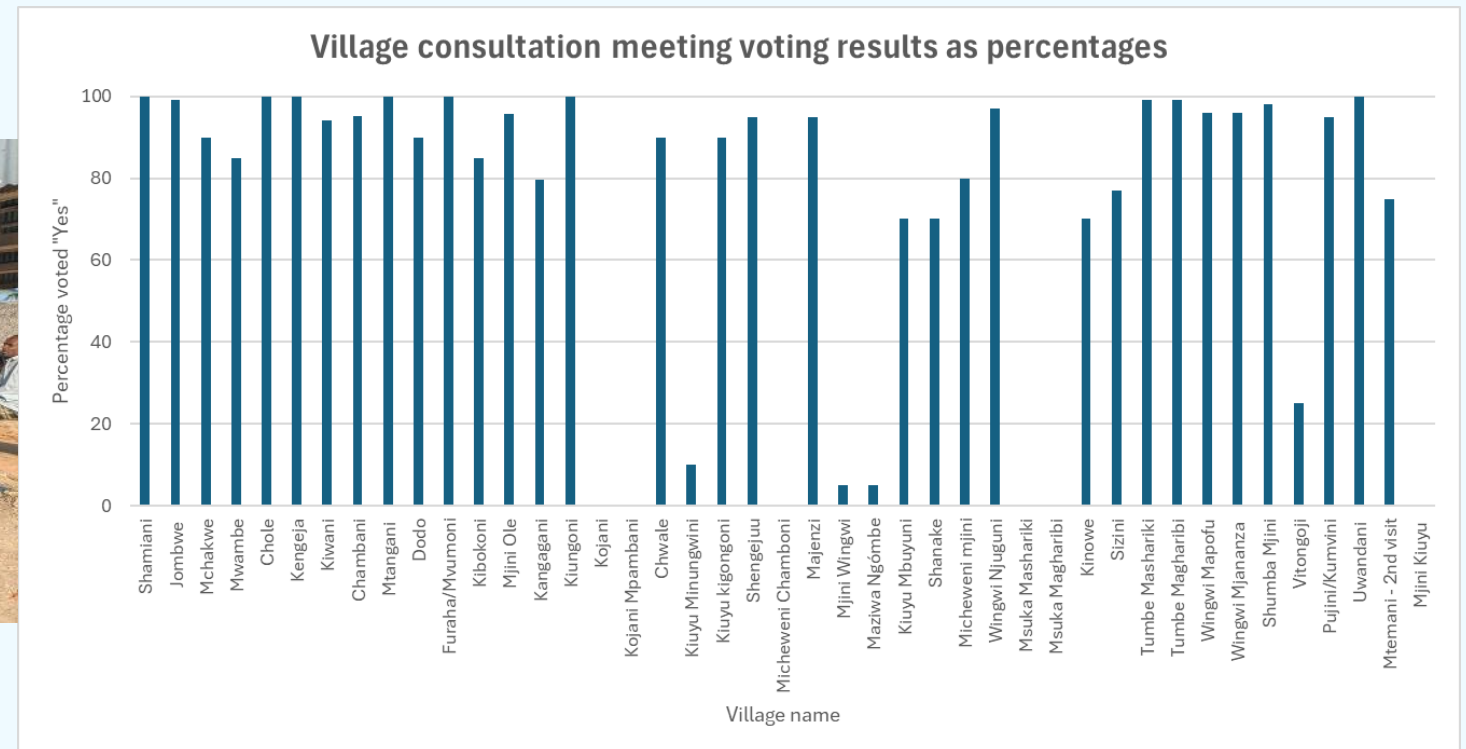
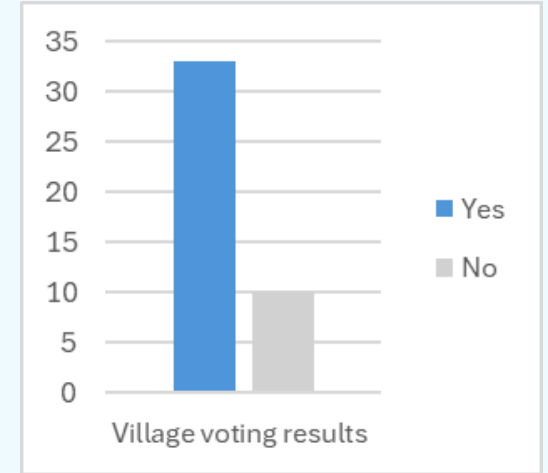
Summary: consultation results and feedback





Results of the first round of village consultation meetings

- 3,814 participants from 43 villages
- 44% women
- 71% voted in favour of MCA
- Out of the 43 villages 33 accepted the MCA





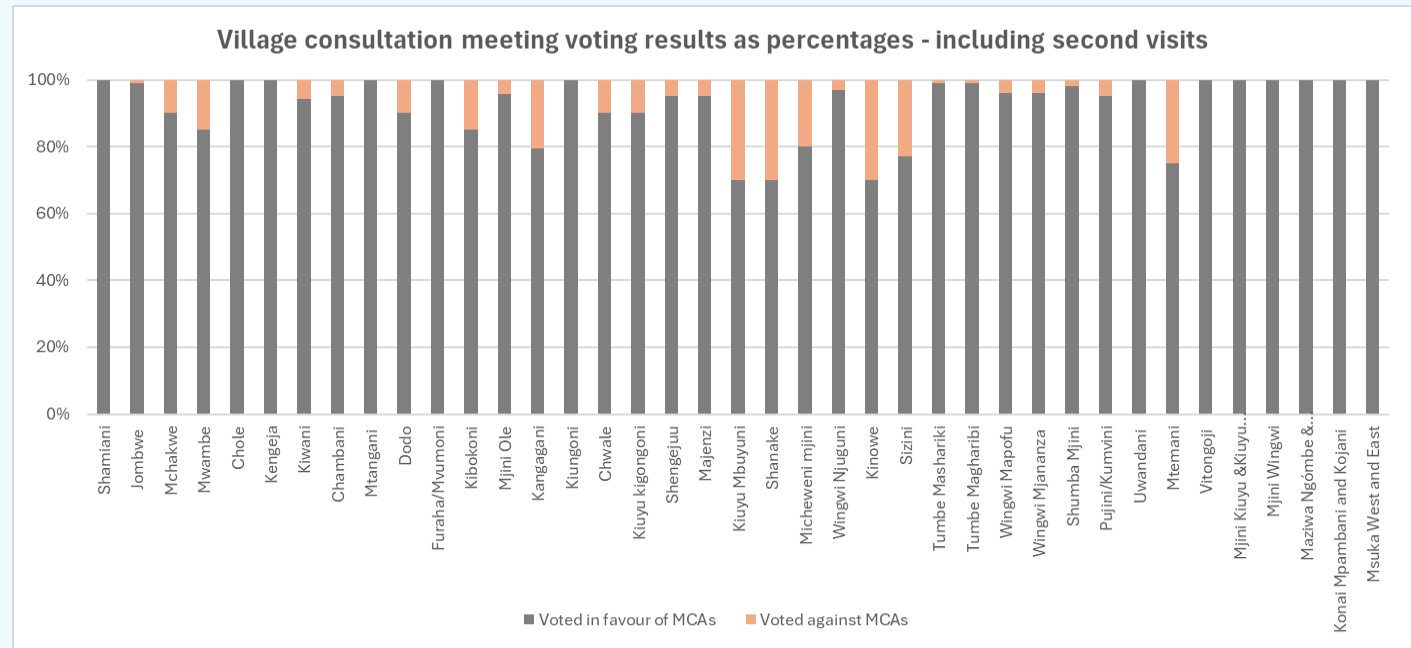
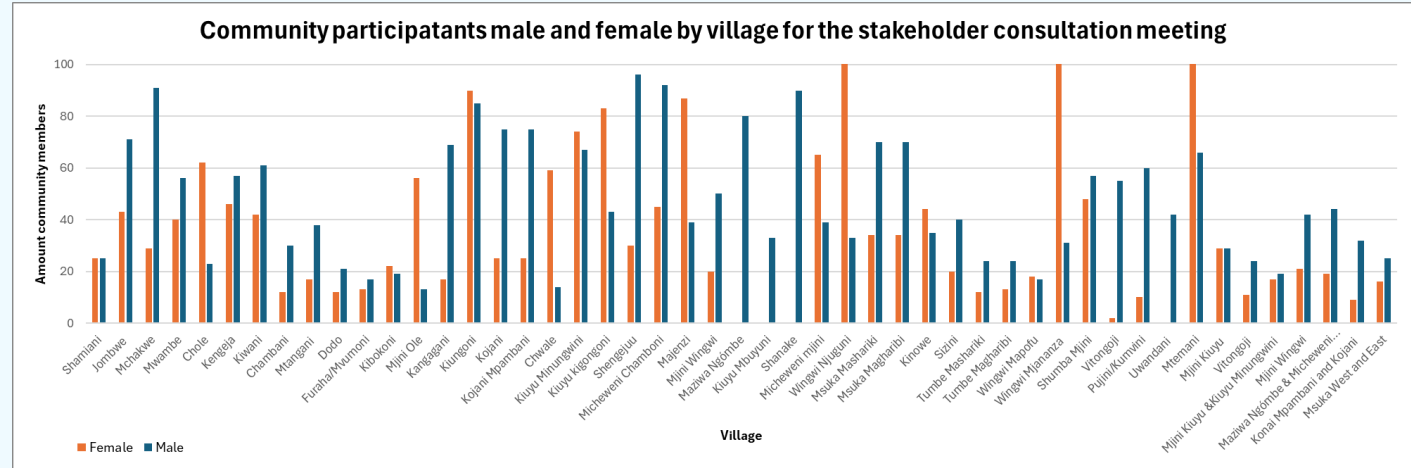
Results after the second round of village consultation meetings

Second round of consultations:

- 278 participants from 10 villages
- 33% women
- Out of the 10 villages 9 accepted the MCA

Combined results:

- 4,092 participants from 43 villages
- 44% women
- 92.45% voted in favor of MCA
- Out of the 43 villages 42 accepted the MCA.





Key Messages from Stakeholder Consultation

Questions raised:

- Will the formation of the MCA block illegal fishing techniques?
- How will my community benefit?
- Will legal fishers still be allowed to fish in the MCA?
- Will people from outside the MCA be able to fish in the MCA?
- Who will manage the MCA and enforcement?
- How will the revenue be shared with communities?
- Will the MCAs include rivers also?
- What is the reason or what are we conserving with the MCA?
- Who will manage closed areas?
- How will the MCA benefit and give rights to women?
- Will marine animals increase after the closures, leading to better fishing and tourism potential?
- Which gears are illegal?
- Will MCA stop the large illegal boats?



IDARA YA UHIFADHI WA BAHARI ZANZIBAR



UPDATES

Picha ya pamoja Washiriki wa kikao cha kuleta mrejesho juu ya mpango wa uanzishaji wa maeneo ya hifadhi shirikishi ya bahari ya Mashariki ya Pemba

MARUHUBI

18/03/2025



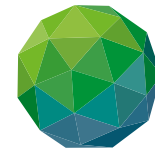


MWAMBAO COASTAL
COMMUNITY NETWORK

Fauna & Flora

Saving Nature Together
Saving Nature Together

Community engagement and MPA co-management



GREEN
CLIMATE
FUND

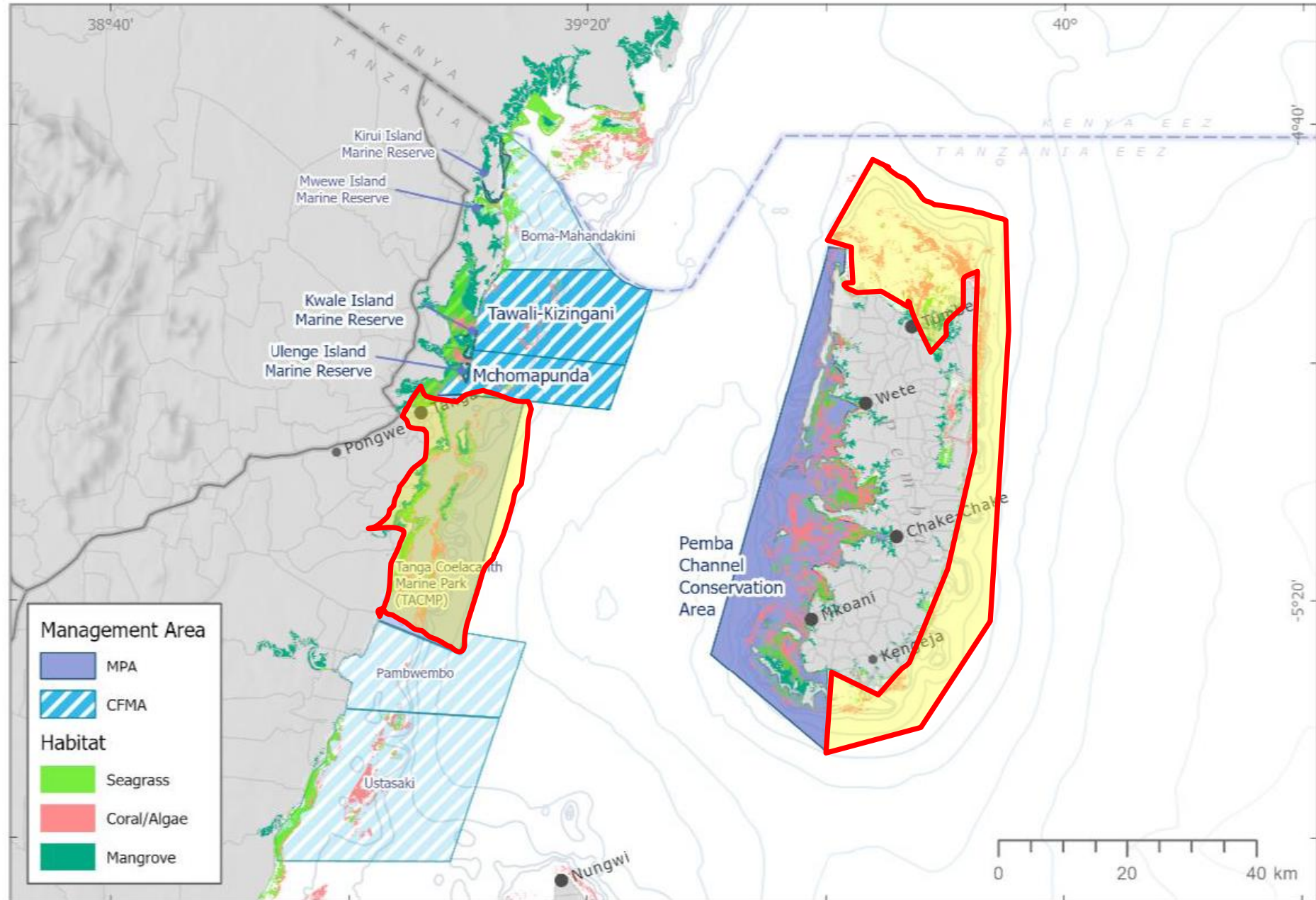


In Pemba Channel, Tanzania

22 APRIL 2026

Tanguy Nicolas, Fauna & Flora

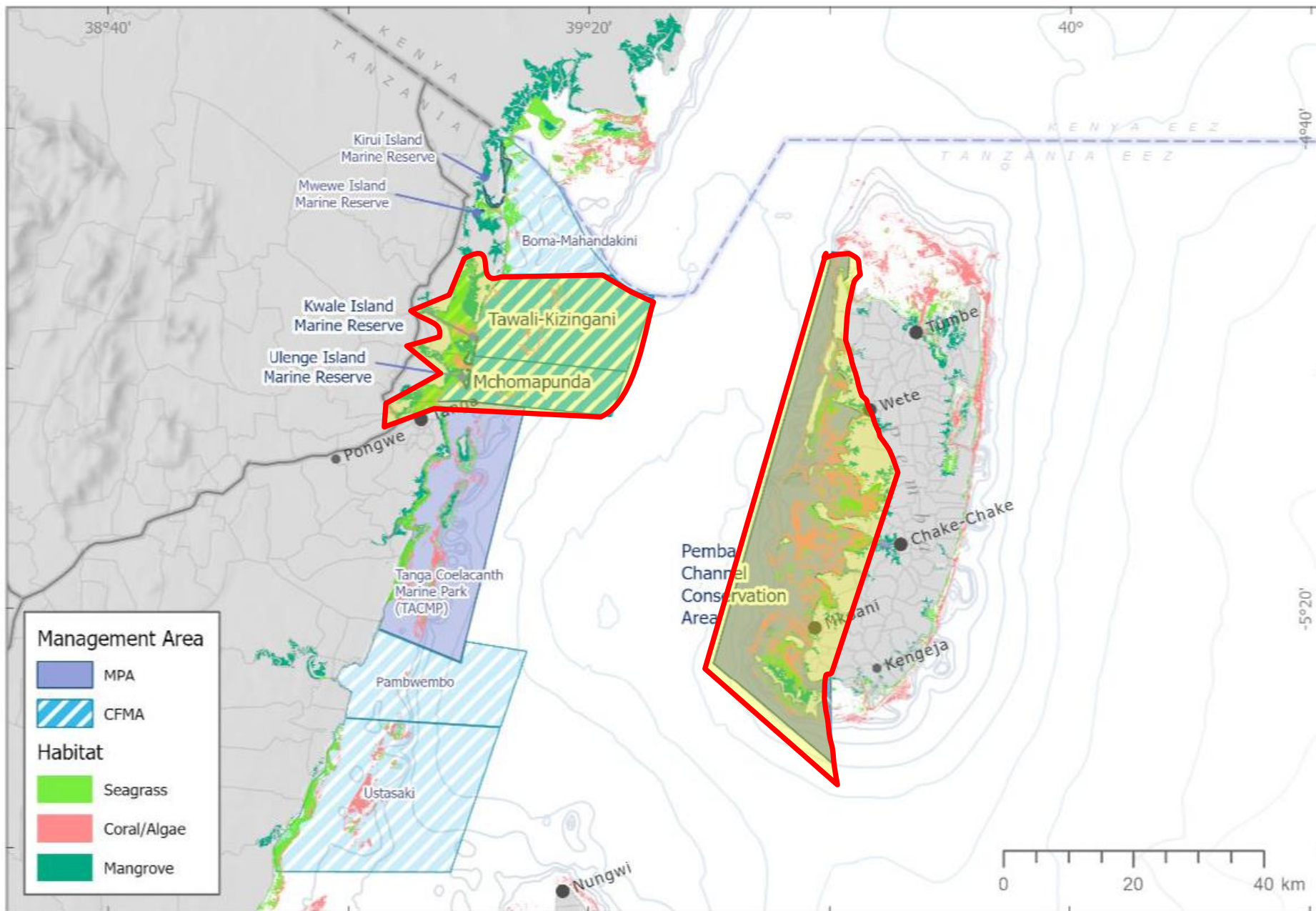
Pemba Channel – Geographical scope – WCS



Scale: 1:1,000,000 ; Projected Coordinate System: WGS 1984 UTM Zone 37S ; Data: Allen Coral Atlas, NASA Goddard, VLIZ

Pemba Channel – Geographical scope – Fauna & Flora

Fauna & Flora
Saving Nature Together



“CO-MANAGEMENT ROADMAP”

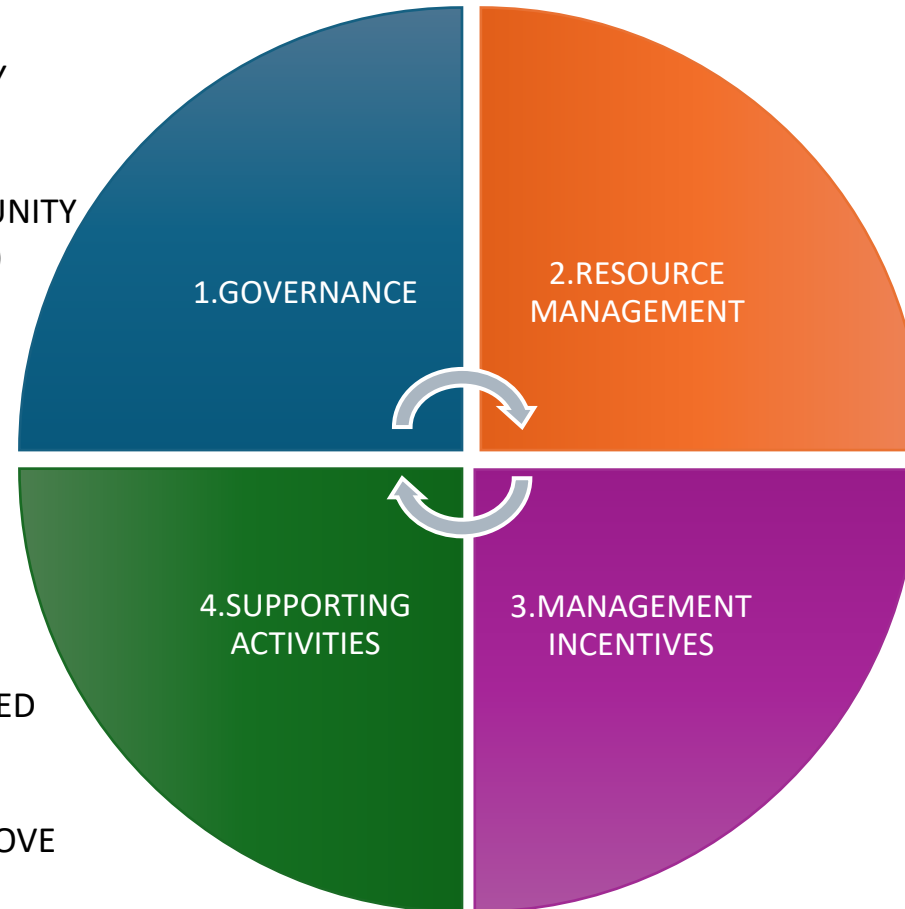


ESTABLISH GOVERNANCE CONTEXT AND BUILD CAPACITY

- SOCIO-ECONOMIC HOUSEHOLD SURVEY
- **GOVERNANCE SELF ASSESSMENT** COMMUNITY LEVEL
- **CAPACITY BUILDING SESSIONS** COMMUNITY LEVEL (many themes incl. **enforcement**)
- SELF-ASSESSMENT GROUP/CLUSTER COMMUNITIES LEVEL
- CAPACITY BUILDING GROUP/CLUSTER COMMUNITIES LEVEL (incl. patrols)

NETWORKING AND ADDITIONAL ACTIVITIES

- WOMEN FISHERS NETWORK
- EXCHANGE VISITS (OTHER CO-MANAGED SITES)
- TARGETED WOMEN FISHER TRAINING
- CORAL REEFS (Reefballs) AND MANGROVE RESTORATION (CBEMR)
- NATIONAL POLICY INPUT AND FEEDBACK
- IMPROVED SEAWEED FARMING



BASELINES AND MONITORING

- **PARTICIPATORY RESOURCE MAPPING**
- FISHER PATTERN SURVEY
- **MANAGEMENT PLANNING AND ZONING**
- MANAGE FOR NEEDS OF DIFFERENT TARGET FISHERIES AND HABITATS
- CATCH MONITORING (Octopus, Reef fish)
- IN-WATER BIODIVERSITY MONITORING
- of MANGROVE MANAGEMENT
- of RESTORATION ZONES (FRZ – FISHERIES REPLENISHMENT ZONES)
- CLIMATE VULNERABILITY ASSESSMENT

INITIATE INCENTIVE SCHEMES

- PARTICIPATORY MARKET SYSTEM DEVELOPMENT
- **MKUBA ECO-FUND SCHEME**
- TRAINING OF MICRO/SMALL ENTREPRISES (MSMEs) – Business, technical, quality
- EXPLORING SUSTAINABLE FINANCE OPTIONS (e.g. TOURISM, OTHER SECTORS)
- REVENUE COLLECTION OPPORTUNITIES
- OTHER LIVELIHOODS DIVERSIFICATION

Recording fish catches



© Mwambao

© Mwambao



Monthly governance progress

Community-led patrols



MWAMBAAO COASTAL
COMMUNITY NETWORK

**Fauna
& Flora**
Saving Nature Together



© Mwambao



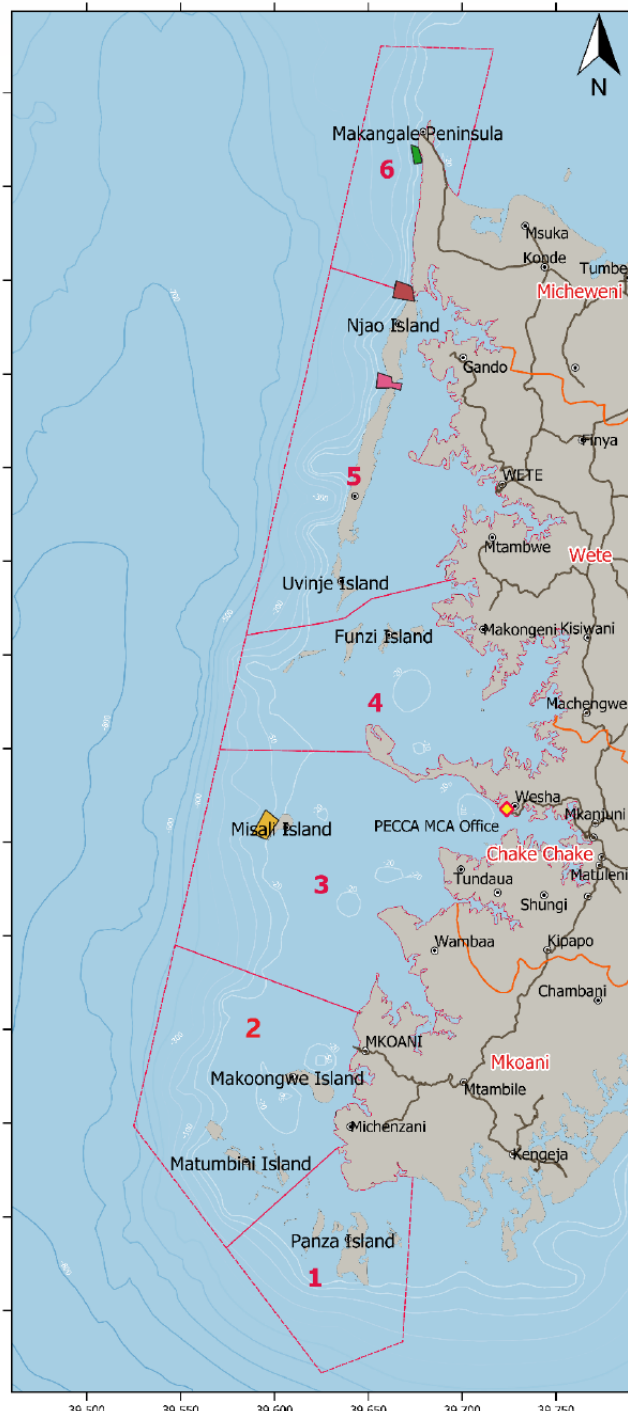
© Mwambao

Eco-fund fortnightly meetings

Some Effective and Challenging parts

- Stronger community **ownership** and **capacity**
- Real **progress** in local **governance, cohesion**
- Local **authorities supportive, trust** relationship developed
- “MKUBA” (eco-fund) is **powerful incentive** and **enabler** for active and sustained engagement
- Stronger **coordination between** fisheries and mangrove **committees**
- **By-laws validation process** (policy framework) finalised in Zanzibar, **clear steps**
- **Turnover of local leaders** can affect community governance capacity
- **Women and youth voices** need to be raised **more** in decision-making
- Some **overlapping projects** and **limited** communication/**coord.** with some actors
- Engagement with **women** requires **sensitive and careful planning** to manage expectations (visits, time)
- **Sustainable financing** pathways still unclear and progress slow





Long-term process to co-manage PECCA

- **Capable and operational community institutions (SFCs, CoFMAs)**
- **Group of neighbouring communities working together** and harmonising management
- **Local Marine Spatial Planning – Blue Economy development and cross-sectoral coordination**
- **Coordination** and some harmonisation (MCS, livelihoods, processes) with **Blue Alliance MPAs in Zones 5 and 6**
- **Revenue collection/generation and finances** reaching community-level
- **Data generated** by and analysed with communities: strongly contributing to **MPA monitoring** and management effectiveness
- **Recognised by-laws** enabling effective Monitoring Control and Surveillance



© Tanguy Nicolas

© Mwambao



**Fauna
& Flora**

For any additional questions or queries:

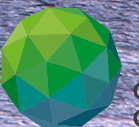
Tanguy Nicolas

Technical Specialist, Africa, marine

tanguy.nicolas@fauna-flora.org



**Fauna
& Flora**
Saving Nature Together



GREEN
CLIMATE
FUND