



Ecologic Institute

Berlin
Brussels
Vienna
Washington DC



Ecologic Institute 1995-2011

Tanja Srebotnjak

Head and Senior Fellow, Ecologic Institute, San Mateo, CA



1995 - 2011

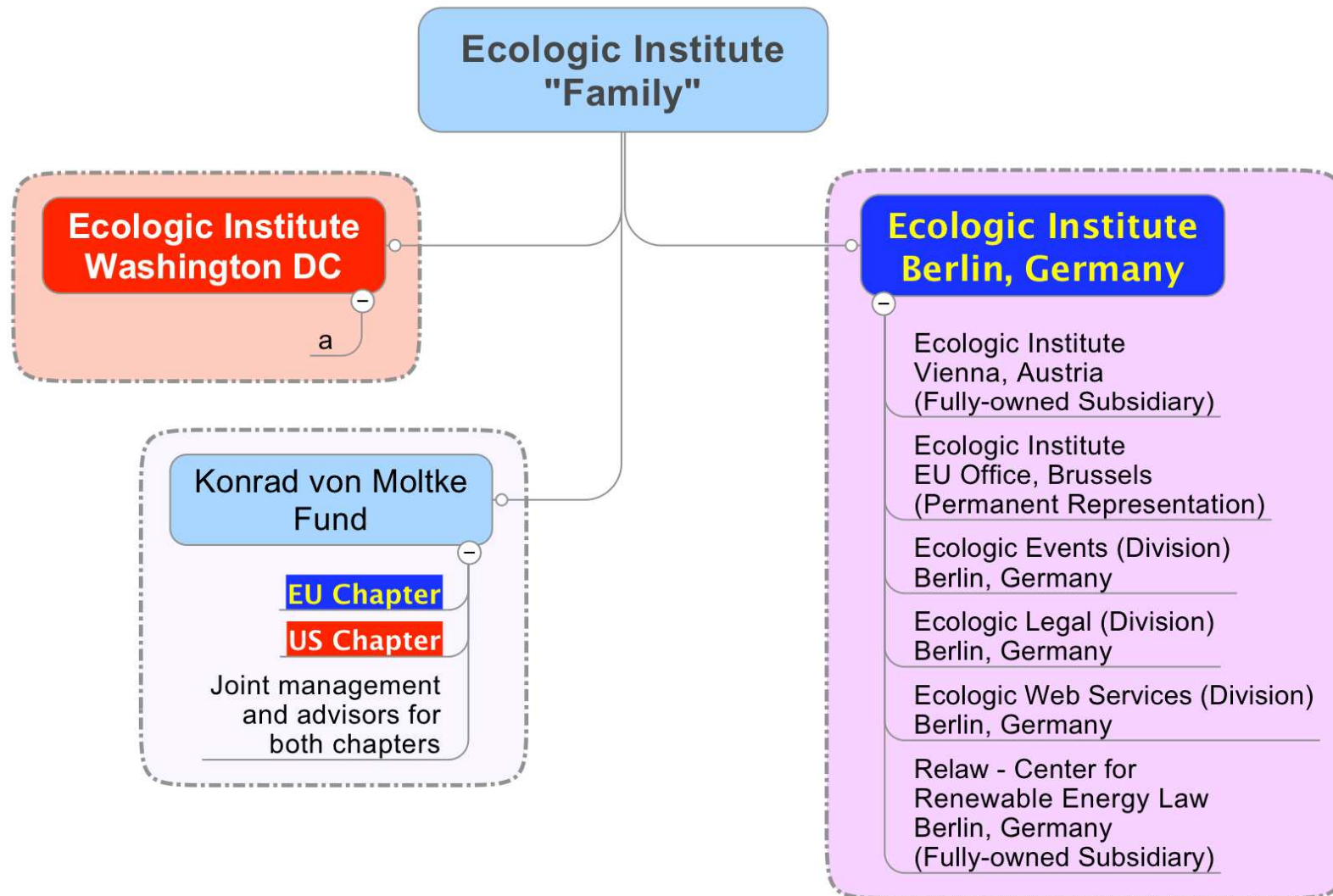
- ▶ **Private, independent, non-partisan, mission-based, non-profit**
- ▶ Independent, constructive and competent **Voice** for:
 - ▶ **Environment** in international, EU, and transatlantic affairs
 - ▶ **International, EU and US** drivers of environment policy
 - ▶ **Integration of environment into other policies**
- ▶ **Think Tank**, 6 founders, Euro 120K core capital, 1.3 m net assets ('10)
Governed by company law (business), '**operative foundation**'
- ▶ 140 staff: **Berlin**, Brussels, Vienna; **Washington DC**, San Mateo
- ▶ **Policy-relevant** science, and **science-based** policy analysis & advisory
- ▶ Project-driven, solution-oriented, inclusive and trans-disciplinary



<http://www.ecologic.eu>

1995 - 2011

- ▶ **1995 Ecologic Institute Berlin, Germany**
- ▶ 2000 Ecologic Legal (16 staff lawyers, 2011)
- ▶ 2001 Ecologic Institute Brussels, EU Office
- ▶ **2001 Transatlantic Program**
- ▶ 2002 Ecologic Events
- ▶ 2005 Konrad von Moltke Fund (EU chapter 75K Euro, 2011)
- ▶ **2006 Relaw, Clearing House for renewable energy**
- ▶ **2007 Ecologic Institute Vienna, Austria**
- ▶ **2008 Ecologic Institute Washington, DC**
- ▶ 2009 Konrad von Moltke Fund (US chapter 25K US\$, 2011)
- ▶ **2011 Ecologic Institute California, San Mateo Project Office**





Ecologic Institute US

www.eius.org

- ▶ Legally and financially independent **Public Charity** (laws of the D.C.)
- ▶ Qualified under US IRC Sections 170(b)(10)(A)(vi), **501(c)(3)**, [509(a)(1)]
- ▶ Dedicated **Team of 4+** staff (2012) at Dupont Circle in D.C. and San Mateo, CA
- ▶ Policy-relevant work but no lobbying, in six core areas (**Programs**):
 - ▶ Explaining the **European Union** (and changing the Washington debate)
 - ▶ **Climate and Energy** (e.g. carbon trading & international negotiations)
 - ▶ Infrastructure Finance & **Economics of Transition** (e.g. crisis & stimulus)
 - ▶ **Transatlantic Dialogues** & Exchanges (e.g. farmers, journalists)
 - ▶ **Economic assessment, statistics, indicators**
 - ▶ US & EU as **Partners in the World** (e.g. Arctic policy, UN reform)
 - ▶ **Biodiversity** and Conservation (e.g. access and benefit sharing)
- ▶ Focused on **Washington DC**, outreach to US states & Canada
- ▶ Building a relevant presence on the **Pacific Coast**



Michael Mehling
President, Ecologic Washington