

# **Collaboration between WFD Implementation & Spatial Planning: Experiences from Schleswig-Holstein**

**Nadine Herbke**

**Ecologic - Institute for International and European  
Environmental Policy**

**Berlin - Brussels**



# Table of Content

---

- **Ecologic's work on WFD implementation**
- **Brief overview of CAP&WFD project**
- **WFD and spatial planning: Experiences from Schleswig-Holstein**
  - **WFD implementation**
  - **Considering spatial planning aspects**
  - **Window of opportunity for the future**

## **Ecologic's work on WFD implementation**

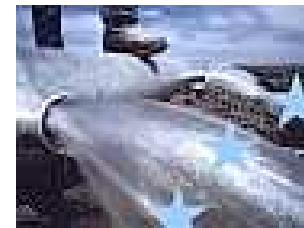
---

- **Several European projects with focus on the following issues**
    - **Economic elements of the WFD**
    - **Heavily Modified Water Bodies (HMWB)**
    - **Monitoring aspects**
    - **Public participation in the WFD**
    - **WFD and agriculture**
- **Project “WFD meets CAP - Opportunities for the future”**

# CAP&WFD Project

---

- Research project (**Specific Support to Policies**)
- Supporting the CIS Strategic Steering Group on WFD and agriculture
- Identifying linkages between CAP and WFD
- Background papers on
  - Policy and legal linkages between both policies
  - Rural Development and WFD
  - Cross-compliance and WFD
  - Incentive water pricing

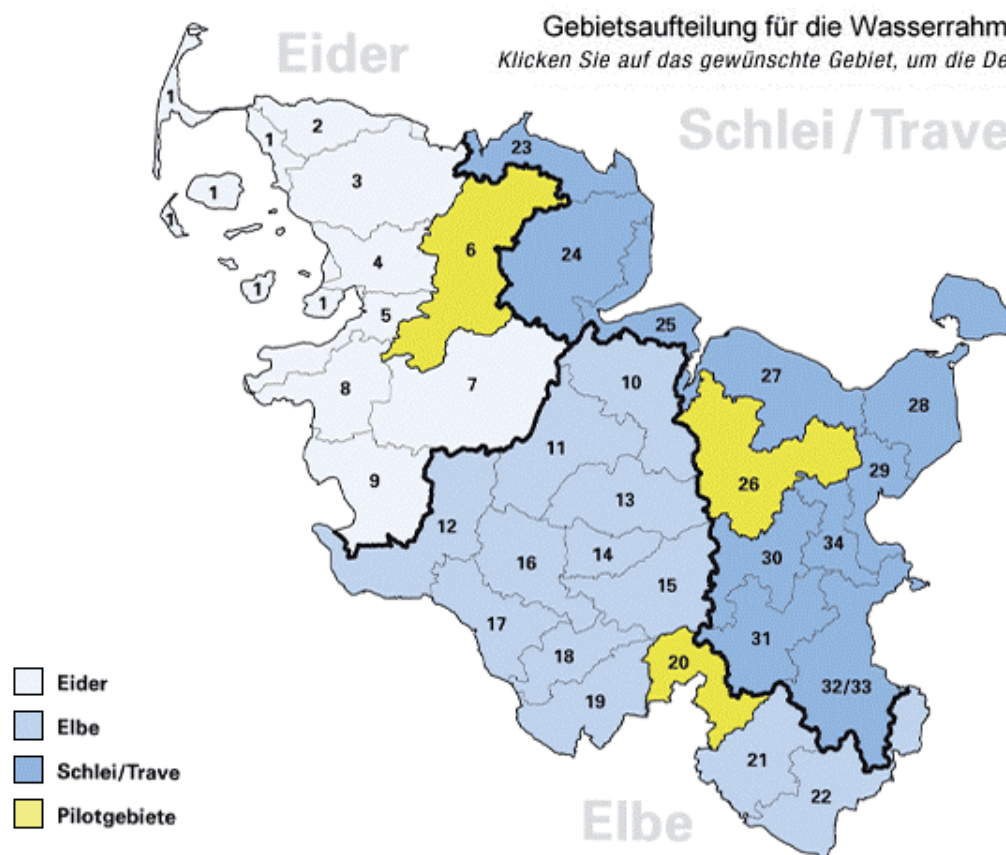




ecologic.de



# River Basin Districts (RBD) in SH



Source of map:  
[www.wasser.sh/](http://www.wasser.sh/)



## WFD & Spatial planning in SH

- Key elements for implementation at **RBD level**
  - Co-ordination between responsible authorities
  - Stakeholder consultation and public participation
- Co-ordination at RBD level through advisory boards: *Flussgebietsbeiräte*
  - **Members:** authorities for rural development, municipalities, chamber of commerce & industry, water associations etc.
  - Discussion on **overall implementation process** and important measures planned in the RBD



## WFD & Spatial Planning in SH (cont.)

Working groups below RBD level: *Arbeitsgruppen*

- Co-ordinated by **water and soil associations** which have a long tradition in river basin management planning
- **Members:** local water supplier, regional offices of different stakeholders
- Discussion on **local implementation efforts** and specific measures planned in the working / implementation area
- Also change in land-use management discussed

# Window of opportunity for the future

---

## Development of **Programmes of Measures** (2008)

- Need to consider spatial planning requirements
- Impact on **land use** important while defining riparian measures
  - Change from industrial areas to green spaces causes in most cases deterioration
- **Inter-sectorial discussion** of individual measures needed in order to allow for later implementation
- Consultation activities needed





ecologic.de



# Thank you for your attention!

**Nadine Herbke**

**Ecologic, Pfalzburger Str. 43-44, D-10717 Berlin**

**☎ +49-30-86880-0, 📠 +49-30-86880-100**

**herbke@ecologic.de, [www.ecologic.de](http://www.ecologic.de)**